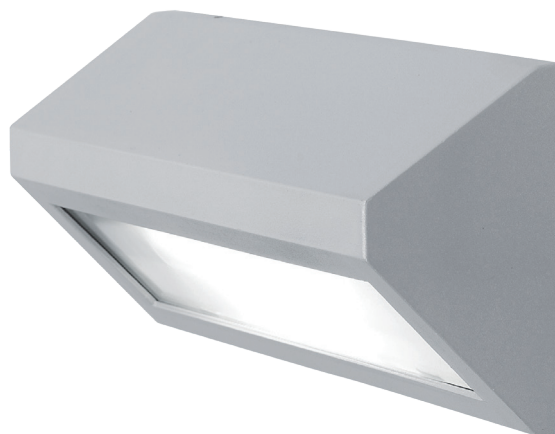


1356

# APPLIQUE



**SPECIFICATIONS:**

Forward throw 
 1.8 kg 
 CRI 82+ 
 CRI 70+ 
 Class I 
 IP54 
 CE 
 5 Year warranty 
 Made in Australia

**CONSTRUCTION & DESIGN**

- Surface mounted LED exterior forward throw wall light
- Constructed in die cast aluminium alloy and finished in durable polyester powder-coat paint
- Tempered frost glass cover silicone gaskets and stainless steel fasteners provide IP54 protection
- Efficient forward throw optics with efficient cut off control ensures almost no-upward illumination

**OPTICAL & THERMAL PERFORMANCE**

- LED thermal management incorporates both conduction and natural convection to transfer heat rapidly away from LED source to achieve maximum life of LED
- High efficiency optics for brilliant optical control and excellent vertical illumination with no harsh cut off and ultra low glare

**ELECTRICAL SYSTEM**

- Supplied standard with an integral leading and trailing edge mains dimmable driver and terminal block (refer to dimming options table)
- Power factor > 0.9 with active power factor correction
- Input voltage 220-240V, 50/60 Hz

**TECHNICAL PERFORMANCE**

- 13W total system power consumption with overload and short circuit protection
- >65,000 hours lifespan (L70)
- Premium quality LED Module with high lumen output per watt
- Chromaticity tolerance (macAdam step) - 2
- Available in 3K, 4K or 5K colour temperature with low colour shift over time
- CRI 90+ is available upon request

**CODE ORDERING GUIDE:** PRODUCT CODE / DIM CODE - COLOUR CODE

Example: 1356-3K-13W-03 or 1356-3K-13W/DALI-03

SYSTEM POWER	COLOUR TEMP.	74x69° BEAM ANGLE	HOT LED LUMENS	LUMINAIRE LUMEN OUTPUT
		PRODUCT CODE		74x69°
13W	3K	1356-3K-13W	1519	1030
	4K	1356-4K-13W	1607	1065
	5K	1356-5K-13W	1568	1062

DIM CODE	OPTIONS	13W
/DALI	Dali Dimming	✓
/DSI	Digital Dimming	x
/AD	Analogue Dimming 1-10V	x
/DIM	Leading & Trailing edge	Std

COLOUR CODE		
-03		Textured White
-07		Textured Black
-11		Textured Silver

