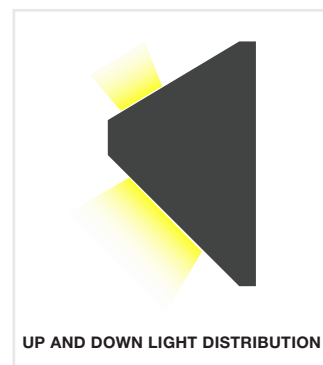
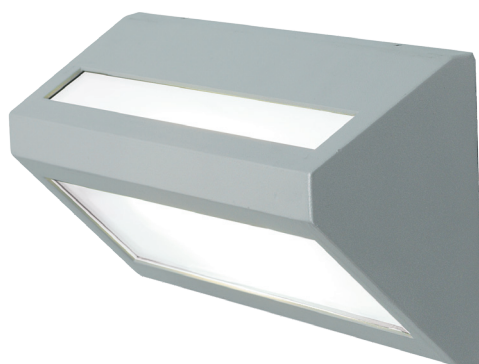


1536

APPLIQUE



SPECIFICATIONS:

Forward throw
 1.8 kg
 CRI 82+
 CRI 70+
 Class I
 IP54
 CE
 5 Year warranty
 Made in Australia

CONSTRUCTION & DESIGN

- Surface mounted LED exterior up and down forward throw wall light
- Constructed in die cast aluminium alloy and finished in durable polyester powder-coat paint
- Tempered frost glass cover silicone gaskets and stainless steel fasteners provide IP54 protection

OPTICAL & THERMAL PERFORMANCE

- LED thermal management incorporates both conduction and natural convection to transfer heat rapidly away from LED source to achieve maximum life of LED
- High efficiency optics for brilliant optical control and excellent vertical illumination with no harsh cut off and ultra low glare

ELECTRICAL SYSTEM

- Supplied standard with an integral leading and trailing edge mains dimmable driver and terminal block (refer to dimming options table)
- Power factor > 0.9 with active power factor correction
- Input voltage 220-240V, 50/60 Hz

TECHNICAL PERFORMANCE

- 13W total system power consumption with overload and short circuit protection
- >65,000 hours lifespan (L70)
- Premium quality LED Module with high lumen output per watt
- Chromaticity tolerance (macAdam step) - 2
- Available in 3K, 4K or 5K colour temperature with low colour shift over time
- CRI 90+ is available upon request

CODE ORDERING GUIDE:

PRODUCT CODE / DIM CODE - COLOUR CODE

Example: 1536-3K-13W-03 or 1536-3K-13W/DALI-03

SYSTEM POWER	COLOUR TEMP.	74x69° BEAM ANGLE PRODUCT CODE	HOT LED LUMENS	LUMINAIRE LUMEN OUTPUT
	4K	1536-4K-13W	1607	758
	5K	1536-5K-13W	1568	740

DIM CODE	OPTIONS	13W
/DALI	Dali Dimming	✓
/DSI	Digital Dimming	×
/AD	Analogue Dimming 1-10V	×
/DIM	Leading & Trailing edge	Std

COLOUR CODE		
-03		Textured White
-07		Textured Black
-11		Textured Silver

